

Always. Reliable. Tight.

hauff
technik®



Cable sealing system

Cable entry system KES-M90

Cable entry system

KES-M90



Article code:
KES-M90-D

Features and technical data:

- pressure-tight ducting system up to 2.5 bar (outer pressure)
- high mechanical stability
- UV-resistant
- elastic connection with special system sleeves and straps made of stainless steel
- smooth inner surface for gentle cable feeding
- sealing of the insert cables with shrink-fit or rubber press-fit method
- low processing temperature up to 5 °C
- adaptation with common cable ducts possible
- hoses with section lengths up to 25 m can be supplied (available on rolls)

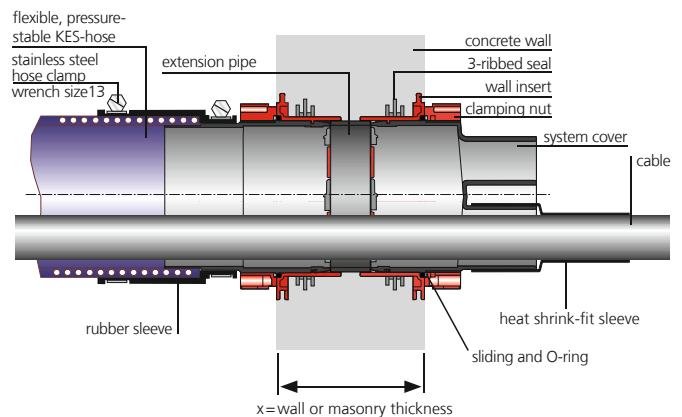
The correct way to quote the article code:

e.g. KES-M90-D
(for connecting to HSI 90 wall insert)

e.g. KES-M1590-KVB
(wall insert for holding system covers)

e.g. Hateflex 14090/8000
spiral hose ID = 90 mm, length 8 m

Cross-section of a concrete wall



Cable entry systems. High stability – perfectly pressure-tight.

The KES-M90 cable entry system enables a pressure-tight cable duct connection up to 2.5 bar to the HSI 90 wall insert. A flexible, UV-resistant Hateflex spiral hose with a smooth inner surface is used as (empty) duct. The ends of the ducts are joined to the connection components via EPDM rubber sleeves. The cable entry systems are ideally suited to providing pressure-tight duct connections of buildings/manholes and for connections to be overbuilt at a later date, etc.

All common connection possibilities can be realised with the cable entry system KES-M90 employing the sleeve system. The unlimited compatibility of all components allows countless possible combinations – for any task and requirement.

Article and system overview

Connection of cable entry systems or cable ducts

		
<p>Article code: KES-M90-D For connecting to HSI90 wall inserts.</p>	<p>Article code: KES-M90-R90 For connecting to core drill holes with standard press seals (projecting pipe length approx. 250 mm).</p>	<p>Article code: KES-M90-KVB Wall insert inclusive sealing cover for connecting HSI90 system cover. *</p>
		
<p>Article code: WE 100-z/d Split interchangeable insert for sealing cable in the sleeve KES-M90-WE z = number of cables d = cable diameter</p>	<p>Article code: KES-M90-WE Sleeve for fitting with WE 100-z/d interchangeable insert (assemble before laying cables).</p>	<p>Article code: KES-M90-M110 For connecting rigid plastic pipes.</p>
		
<p>Best.-Bez.: KES-M90 HTV Connection sleeve for hose extension</p>	<p>Best.-Bez.: Hateflex 14090/x Spiral hose with a smooth inner surface, ID = 90 mm. x = length in mm (1,000 mm increments, max. 25,000 mm)</p>	

* However HRD press seals are not suitable for the use in an assembly frame of the variant KES-M 90-KVB that is not embedded in concrete.

Other connection possibilities on request.

Technical data

Hateflex 14090



Article code:
Hateflex 14090

Features and technical data:

- mechanically strong cable ducting hose
- smooth inner surface, abrasion-resistant, weather-resistant, UV-resistant, rot-resistant, dimensionally stable, resistant to brine and salt water, kink-resistant, flexible and resistant to many chemicals
- lengths from 1 m to 25 m available
- vacuum-resistant up to approx. 8 m w.c.
- recommended minimum laying temperature up to +5°C

Clear width	Weight	Bending radius up +5 °C	Wall thickness	Tear resistance	Peak compressive strength	Roll length	Max. operating pressure (at 20 °C)	Article code
90 mm	2.4 kg/m	500 mm	6.3 mm	300 kg	110kg/10cm/10%	25 m	5 bar	14090

Accessories



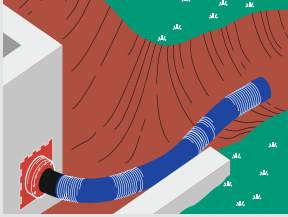
Article code:
KES 90-2x4-KA
Spacer for clean, universal hose bundling.



Article code:
KES-M Toolset
Suitable for all types.
Included:
1 torque wrench 4-20 Nm
1 extension 150 mm
1 socket insert wrench size 13

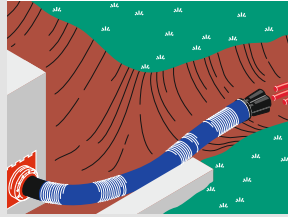
Article and system overview

KES-M90 connection variations and example applications



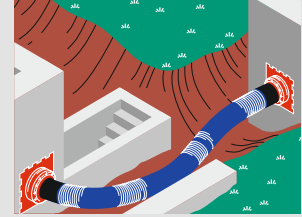
KES-M90-D with spiral hose Hateflex 14090

System cover for connecting to wall inserts HSI90.



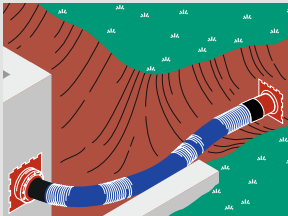
KES-M90-D with spiral hose Hateflex 14090 and KES-M90-D3/32

For multiple entry.



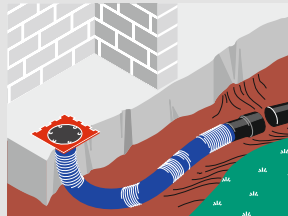
KES-M90-D with spiral hose Hateflex 14090 and KES-M90-D

For directly connecting e.g. two buildings with already concreted HSI 90 wall inserts.



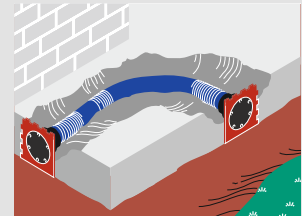
KES-M90-D with spiral hose Hateflex 14090 and KES-M90-KVB

System cover for connecting to HSI90 wall inserts and additional connection point for holding system covers.



KES-M90-KVB with spiral hose Hateflex 14090 with KES-M90-M110

For concreting and connecting pipes.



KES-M90-KVB with spiral hose Hateflex 14090 and KES-M90-KVB

For concreting.



Practical example

TIGHT.CABLE.PIPE.BUILDINGENTRY.ALWAYS.RELIABLE.ALWAYS.TIGHT.CABLE.PIPE.BUILDING
DINGENTRY.ALWAYS.RELIABLE.ALWAYS.TIGHT.CABLE.PIPE.BUILDINGENTRY.ALWAYS.RELIA
ABLE.ALWAYS.TIGHT.CABLE.PIPE.BUILDINGENTRY.ALWAYS.RELIABLE.ALWAYS.TIGHT.CABLE
BUILDINGENTRY.ALWAYS.RELIABLE.ALWAYS.TIGHT.CABLE.PIPE.BUILDINGENTRY.ALWAYS.F
ABLE.PIPE BUILDINGENTRY ALWAYS.RELIABLE.ALWAYS.TIGHT.CABLE.PIPE.BUILDINGENTRY
TRY.ALWAYS.RELIABLE.ALWAYS.TIGHT.CABLE.PIPE.BUILDINGENTRY.ALWAYS.RELIABLE.ALV
LWAYS.TIGHT.CABLE.PIPE.BUILDINGENTRY.ALWAYS.RELIABLE.ALWAYS.TIGHT.CABLE.PIPE.B
BUILDINGENTRY ALWAYS.RELIABLE ALWAYS.TIGHT.CABLE.PIPE.BUILDINGENTRY.ALWAYS.F
AYS.RELIABLE.ALWAYS.TIGHT.CABLE.PIPE.BUILDINGENTRY.ALWAYS.RELIABLE.ALWAYS.TIG
LE ALWAYS.TIGHT CABLE.PIPE.BUILDINGENTRY.ALWAYS.RELIABLE.ALWAYS.TIGHT.CABLE.P
LE.PIPE.BUILDINGENTRY.ALWAYS.RELIABLE.ALWAYS.TIGHT.CABLE.PIPE.BUILDINGENTRY.AL
ALWAYS.RELIABLE.ALWAYS.TIGHT.CABLE.PIPE.BUILDINGENTRY.ALWAYS.RELIABLE.ALWAYS
S.TIGHT.CABLE.PIPE.BUILDINGENTRY.ALWAYS.RELIABLE.ALWAYS.TIGHT.CABLE.PIPE.BUILD
DINGENTRY.ALWAYS.RELIABLE.ALWAYS.TIGHT.CABLE.PIPE.BUILDINGENTRY.ALWAYS.FIA
CABLE.PIPE.BUILDINGENTRY.ALWAYS.RELIABLE.ALWAYS.TIGHT.CABLE.PIPE.BUILDING
NTRY.ALWAYS.RELIABLE.ALWAYS.TIGHT.CABLE.PIPE.BUILDINGENTRY.ALWAYS.FIABLE

ALWAYS HAUFF